

Site: Gagadju Lodge Coinda

Location: Northern Territory - Australia

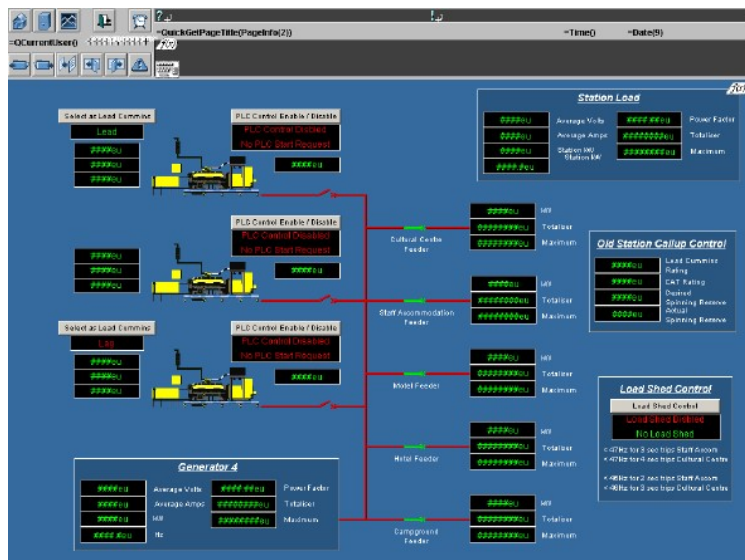
Description: Power Station Automation Project

Equipment: Koyo DL405 PLC
CitectSCADA
Wexler Gencon Controllers
IME Power Metering

The site's Power Station had operated manually for several years, and the existing control system was hard to get either spares or support for. Blackouts were frequent, and significant Operator involvement was necessary to maintain sufficient spinning reserve to meet changing load profiles.

The following works were carried out:

- Replacement of existing Onan Control System with Wexler Gencon Pro hardware.
- Installation of Metering on Feeders.
- Installation of Caterpillar 300kW set.
- Installation and configuration of PLC and CitectSCADA and Modbus communications to Metering and Generator Controllers.
- Integration and testing of Control System.



Result: Minimal downtime during upgrade and rollout of Control System, Automated call up and shut down of sets based on spinning reserve requirements, Automated Load Shedding.