

Site: Tanami Gold Mine

Location: Northern Territory - Australia

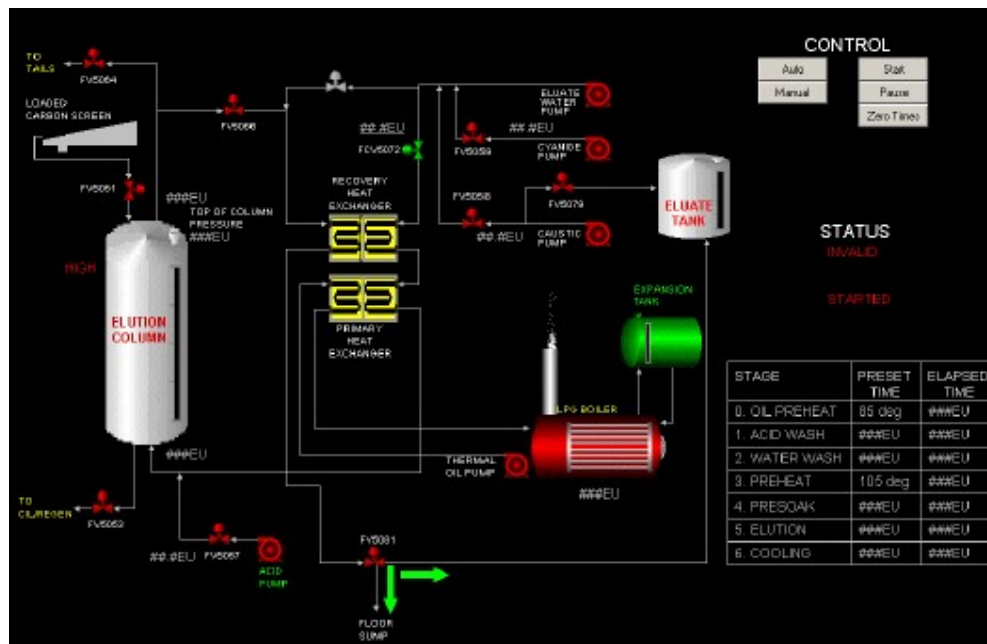
Description: Elution Circuit Automation Project

Equipment: TI545 PLCs
CitectSCADA

The site's Elution Circuit had operated manually for several years, but increased frequency of stripping cycles and the increasing occurrence of spills, trips and shutdowns meant that the process had to be automated.

The following works were carried out:

- Installation of Keystone Valve Actuators and IFM Efeclor Position Indicators.
- Installation and wiring of additional PLC hardware and Instrumentation.
- Off site programming and testing of PLC code and CitectSCADA interface.
- Commissioning and Site Acceptance Testing of Control System.



Result: Zero downtime during modification and rollout of Control System, Automated Elution sequence.