

**Site:** Granites Gold Mine

**Location:** Northern Territory - Australia

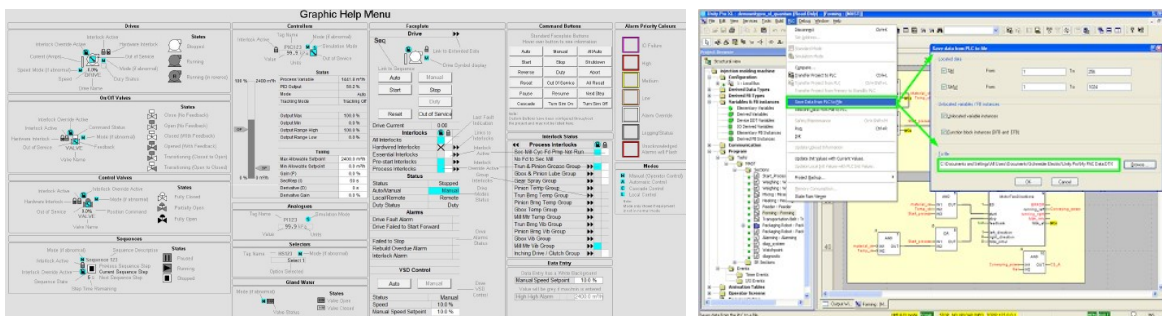
**Description:** SCADA Upgrade Project

**Equipment:** Schneider Quantum, M580, and M340 PLCs  
CitectSCADA

In preparation for a major Process Plant upgrade, it was necessary to re-develop site SCADA and PLC standards and to move towards a modern PLC hardware platform and an ISA-101 / ASM (Abnormal Situation Management) type SCADA Interface. Elmec personnel were directly involved in the specification, project management, detailed design, and implementation of this solution.

The project required the following works to be carried out:

- CitectSCADA Graphics development.
- Development of an integration strategy between the site's existing Schneider Quantum PLCs running Modbus Plus and the new Schneider M340 / M580 PLCs running Modbus TCP/IP.
- PLC and CitectSCADA tagging structures to be defined.
- Definition, development, and testing of standard PLC Function Blocks.



Result: A stable path for the integration of the new PLC platform into the existing plant / future upgrading of the existing plant PLCs, and an operator interface which meets current 'best practice' and which draws directly upon learnings from several world class projects .